

Entrance Of The Queen Of Sheba

Clarinet Solo

Wind Band / Concert Band / Harmonie / Blasorchester / Fanfare

Arr.: Bertrand Moren

Georg Friedrich Händel

EMR 16173

1	Score	2	1 st Trombone $\text{♩} + \text{♭}$
1	Clarinet Solo	2	2 nd Trombone $\text{♩} + \text{♭}$
1	Piccolo	1	Bass Trombone $\text{♩} + \text{♭}$
4	1 st Flute	2	Baritone $\text{♩} + \text{♭}$
4	2 nd Flute	2	E \flat Bass ♩
1	Oboe (optional)	2	B \flat Bass ♩
1	Bassoon (optional)	1	Tuba ♩
1	E \flat Clarinet (optional)	1	String Bass (optional)
5	1 st B \flat Clarinet	1	Timpani
4	2 nd B \flat Clarinet	1	Glockenspiel
4	3 rd B \flat Clarinet		
1	B \flat Bass Clarinet (optional)		
1	B \flat Soprano Saxophone (optional)		
2	1 st E \flat Alto Saxophone		
2	2 nd E \flat Alto Saxophone		
2	B \flat Tenor Saxophone		
1	E \flat Baritone Saxophone (optional)		
1	E \flat Trumpet / Cornet (optional)		
2	1 st B \flat Trumpet / Cornet		
2	2 nd B \flat Trumpet / Cornet		
2	3 rd B \flat Trumpet / Cornet		
2	1 st F & E \flat Horn		
2	2 nd F & E \flat Horn		
2	3 rd F & E \flat Horn		

Special Parts

1	1 st B \flat Trombone ♩
1	2 nd B \flat Trombone ♩
1	B \flat Bass Trombone ♩
1	B \flat Baritone ♩
1	E \flat Tuba ♩
1	B \flat Tuba ♩

Fanfare Parts

2	1 st Flugelhorn
2	2 nd Flugelhorn
2	3 rd Flugelhorn

Print & Listen
Drucken & Anhören
Imprimer & Ecouter



www.reift.ch



EDITIONS MARC REIFT

Route du Golf 150 • CH-3963 Crans-Montana (Switzerland)

Tel. +41 (0) 27 483 12 00 • Fax +41 (0) 27 483 42 43 • E-Mail : info@reift.ch • www.reift.ch

DISCOGRAPHY



Greetings

Track N°	Titel / Title (Komponist / Composer)	Time	N° EMR Clarinet & Wind Band	N° EMR Clarinet & Piano
1	Greetings From Italy (Kadlec)	5'55	EMR 16170	EMR 16180
2	Oblivion (Piazzolla)	4'10	EMR 16171	EMR 16181
3	Romeo And Juliet (Rota)	3'53	EMR 16172	EMR 16182
4	Entrance Of The Queen of Sheba (Händel)	3'21	EMR 16173	-
5	Song From A Secret Garden (Lovland)	3'43	EMR 16174	-
6	Bulgarian Festival (Moren)	7'09	EMR 16175	EMR 16183
7	Russian Dance (Böhme)	4'38	EMR 16176	EMR 16184
8	Largo (Bach)	4'25	EMR 16177	EMR 16185
9	Mangroove (Naulais)	3'48	EMR 16178	EMR 16186
10	My Way (Reveaux / François)	3'46	EMR 16179	-

Zu bestellen bei • A commander chez • To be ordered from:

Editions Marc Reift • Route du Golf 150 • CH-3963 Crans-Montana (Switzerland) • Tel. +41 (0) 27 483 12 00 • Fax +41 (0) 27 483 42 43 • E-Mail: info@reift.ch • www.reift.ch

**B♭ CLARINET
SOLO**

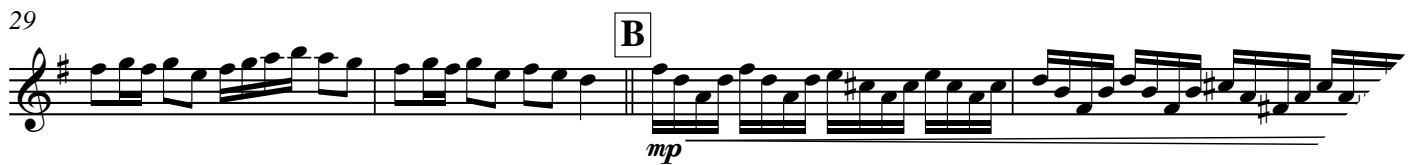
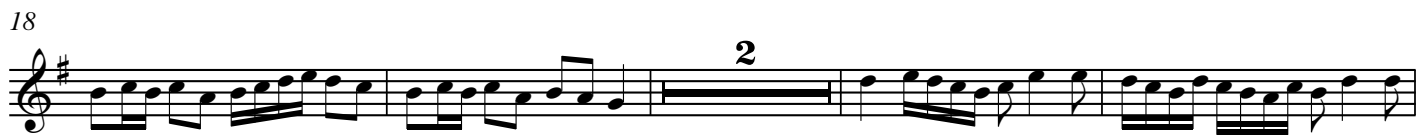
Entrance Of The Queen Of Sheba

Georg Friedrich Händel

Arr.: Bertrand Moren

Allegro ♩ = 100

 Photocopying
is illegal!



EMR 16173

© COPYRIGHT EDITIONS MARC REIFT CH-3963 CRANS-MONTANA (SWITZERLAND)
ALL RIGHTS RESERVED - INTERNATIONAL COPYRIGHT SECURED

www.reift.ch

Photocopying is illegal!

Entrance Of The Queen Of Sheba

Georg Friedrich Händel
Arr.: Bertrand Moren

Allegro ♩ = 100

2 3 4 5 6

Solo B♭ Clarinet *f*

Piccolo

Flute 1,2

Oboe

Bassoon *mf*

1st B♭ Clarinet *mf*

2nd B♭ Clarinet *mf*

3rd B♭ Clarinet *mf*

B♭ Bass Clarinet *mf*

1st E♭ Alto Saxophone *mf*

2nd E♭ Alto Saxophone *mf*

B♭ Tenor Saxophone *mf*

E♭ Baritone Saxophone *mf*

1st B♭ Trumpet / Cornet Straight Mute

2nd B♭ Trumpet / Cornet Straight Mute

3rd B♭ Trumpet / Cornet Straight Mute

1st F Horn *mf*

2nd F Horn *mf*

3rd F Horn *mf*

1st Trombone *mf*

2nd Trombone *mf*

Bass Trombone *mf*

Baritone *mf*

Tuba in C *mf*

String Bass (optional) *mf*

Timpani *mf*

Glockenspiel

EMR 16173

© COPYRIGHT EDITIONS MARC REIFT CH-3963 CRANS-MONTANA (SWITZERLAND)
ALL RIGHTS RESERVED - INTERNATIONAL COPYRIGHT SECURED

www.reift.ch

14

15

16

A

17

18

19

20

Solo Cl. *f*

Picc. *f*

Fl.1,2 *f*

Ob. *f*

Bsn. *f*

Cl.1 *f*

Cl.2 *f*

Cl.3 *f*

B.Cl. *f*

A.Sax.1 *f*

A.Sax.2 *f*

T.Sax. *f*

B.Sax. *f*

Tpt./Cnt.1 *f* Open One Solo Tutti

Tpt./Cnt.2 *f* Open

Tpt./Cnt.3 *f* Open

Hn.1 *f*

Hn.2 *f*

Hn.3 *f*

Tbn.1 *f*

Tbn.2 *f*

B.Tbn. *f*

Bar. *f*

Tba. *f*

S.Bass *f*

Timp. *f*

Glock. *f*

Collection Milan Rericha



Clarinet Solo

- EMR 16005 GRGIN, Ante Capriccio N° 1, 2 & 3
EMR 16057 PAGANINI, Niccolo Caprice N° 24

Clarinet & Piano

- EMR 16100 BACH, Johann Sebastian Aria
EMR 16096 BACH, Johann Sebastian Arioso
EMR 16067 BACH / GOUNOD Ave Maria
EMR 16090 CACCINI, Giulio Ave Maria
EMR 16101 ROCHA, Gilles Ave Maria
EMR 16063 SCHUBERT, Franz Ave Maria
EMR 16099 BACH, Johann Sebastian Badinerie
EMR 16104 POROMBESCU, Ciprian Balada
EMR 16122 NAULAIS, Jérôme Bayside
EMR 16120 NAULAIS, Jérôme Blue Day
EMR 16032 PAGANINI, Niccolo Caprice N° 24
EMR 16018 MORTIMER, John Glenesk Carmen Fantasy
EMR 16034 KING, Peter (Arr.) Ciocarlia
EMR 16006 MORTIMER, John Glenesk Clarinet Carnival
EMR 16007 MORTIMER, John Glenesk Clarinetissimo
EMR 16000 GRGIN, Ante Concertino
EMR 16092 MORTIMER, John Glenesk Concertino
EMR 16045 BELLINI, Vincenzo Concerto
EMR 16008 GRGIN, Ante Concerto
EMR 16049 SHAW, Artie Concerto For Clarinet
EMR 16021 MONTI, Vittorio Csardas
EMR 16009 GRGIN, Ante Czardas Variations
EMR 16088 PUCCINI, Giacomo E Lucevan le stelle
EMR 16020 NAULAIS, Jérôme Flamme And Co
EMR 16022 RIMSKY-KORSAKOV, Nikolai Flight Of the Bumble-Bee
EMR 16118 NAULAIS, Jérôme For You
EMR 16037 MORTIMER / ASHKENAZY Gershwin Greats
EMR 16074 HUBAY, Jenö Hejre Kati
EMR 16033 DINICU, Grigoras Hora Staccato
EMR 16027 GIMENEZ, Geronimo Intermedio
EMR 16061 WIDOR, Charles-Marie Introduction & Rondo
EMR 16065 SAINT-SAENS, Camille Introduction et Rondo Capriccioso
EMR 16024 ROSSINI, Gioacchino Introduction, Theme and Variations
EMR 16126 NAULAIS, Jérôme It's Just Like A Dream
EMR 16125 NAULAIS, Jérôme It's Time
EMR 16010 RICHARDS, Scott (Arr.) Japanese Folksongs
EMR 16124 NAULAIS, Jérôme Julito Mio
EMR 16117 NAULAIS, Jérôme Just One
EMR 16030 SAURER, Marcel Klezmer Fantasy
EMR 16086 HÄNDEL, Georg Friedrich Largo from Xerxes
EMR 16043 SAINT-SAENS, Camille Le Cygne
EMR 16040 MASSENET, Jules Meditation
EMR 16026 KALLIWODA, Johann Morceau de Salon
EMR 16019 PAGANINI, Niccolo Moto Perpetuo
EMR 16095 PUCCINI, Giacomo Nessun Dorma
EMR 16059 ELGAR, Edward Nimrod
EMR 16055 BORODINE, Alexander Polovetzian Dance
EMR 16029 GERSHWIN, George Rhapsody in Blue
EMR 16070 SAINT-SAENS, Camille Romance
EMR 16097 WEBER, Carl Maria von Romance
EMR 16011 DEBONS, Eddy Saltatio Diabolica
EMR 16012 HÖHNE, Carl Slavonic Fantasy
EMR 16013 BACH, Carl Philipp Emanuel Solfeggietto
EMR 16041 SEDAKA, Neil Solitaire
EMR 16036 VALTA, Jan Sonatina
EMR 16048 PARSON, Ted South American Suite
EMR 16042 BILK, Acker Stranger On The Shore
EMR 16028 RIMSKY-KORSAKOV, Nikolai Swingair Bumble Bee
EMR 16119 ARMITAGE, Dennis Take-Off
EMR 16038 SCHUBERT, Franz The Bee
EMR 16102 BIZET, Georges The Pearl Fishers
EMR 16014 GRGIN, Ante Theme and Variations N° 1
EMR 16015 GRGIN, Ante Theme and Variations N° 2
EMR 16091 GERSHWIN, George Three Gershwin Songs
EMR 16016 BELLINI, Joe (Arr.) Tico-Tico
EMR 16085 SUBA, Eduardo (Arr.) Tico-Tico
EMR 16123 NAULAIS, Jérôme Tundra
EMR 16072 TCHAIKOVSKY, Pyotr Ilyitch Variations On A Rococo Theme

Clarinet & Piano (Fortsetzung - Continued - Suite)

- EMR 16017 RICHARDS, Scott Variations On The Tyrolienne
EMR 16039 MORTIMER, John Glenesk Virtuoso Verdi
EMR 16121 ARMITAGE, Dennis Wild And Blue
EMR 16031 PETER, Gustav Zirkus Renz
EMR 16023 BACH, Johann Sebastian Badinerie
EMR 16025 NAULAIS, Jérôme Blue Clarinet

Clarinet & Concert Band

- EMR 16112 BACH, Johann Sebastian Aria
EMR 16107 BACH, Johann Sebastian Arioso
EMR 16105 BACH / GOUNOD Ave Maria
EMR 16110 CACCINI, Giulio Ave Maria
EMR 16113 ROCHA, Gilles Ave Maria
EMR 16115 SCHUBERT, Franz Ave Maria
EMR 16054 BACH, Johann Sebastian Badinerie
EMR 16111 BACH, Johann Sebastian Badinerie
EMR 16116 POROMBESCU, Ciprian Balada
EMR 16136 NAULAIS, Jérôme Bayside
EMR 16053 NAULAIS, Jérôme Blue Clarinet
EMR 16134 NAULAIS, Jérôme Blue Day
EMR 16047 PAGANINI, Niccolo Caprice N° 24
EMR 16128 KING, Peter (Arr.) Ciocarlia
EMR 16046 BELLINI, Vincenzo Concerto
EMR 16050 SHAW, Artie Concerto For Clarinet
EMR 16132 NAULAIS, Jérôme For You
EMR 16140 NAULAIS, Jérôme It's Just Like A Dream
EMR 16139 NAULAIS, Jérôme It's Time
EMR 16051 RICHARDS, Scott (Arr.) Japanese Folksongs
EMR 16138 NAULAIS, Jérôme Julito Mio
EMR 16130 NAULAIS, Jérôme Just One
EMR 16052 SAURER, Marcel Klezmer Fantasy
EMR 16108 MASSENET, Jules Meditation
EMR 16106 PUCCINI, Giacomo Nessun Dorma
EMR 16056 BORODINE, Alexander Polovetzian Dance
EMR 16109 WEBER, Carl Maria von Romance
EMR 16035 HÖHNE, Carl Slavonic Fantasy
EMR 16129 BILK, Acker Stranger On The Shore
EMR 16133 ARMITAGE, Dennis Take-Off
EMR 16114 BIZET, Georges The Pearl Fishers
EMR 16131 ABREU, Zequinha Tico-Tico
EMR 16137 NAULAIS, Jérôme Tundra
EMR 16135 ARMITAGE, Dennis Wild And Blue

Clarinet & String Orchestra

- EMR 16066 BACH / GOUNOD Ave Maria
EMR 16080 CACCINI, Giulio Ave Maria
EMR 16062 SCHUBERT, Franz Ave Maria
EMR 16068 MORTIMER, John Glenesk Carmen Fantasy
EMR 16082 MORTIMER, John Glenesk Concertino
EMR 16073 HUBAY, Jenö Hejre Kati
EMR 16060 WIDOR, Charles-Marie Introduction & Rondo
EMR 16064 SAINT-SAENS, Camille Introduction et Rondo Capriccioso
EMR 16076 HÄNDEL, Georg Friedrich Largo from Xerxes
EMR 16058 ELGAR, Edward Nimrod
EMR 16069 SAINT-SAENS, Camille Romance
EMR 16044 SCHUBERT, Franz The Bee
EMR 16081 GERSHWIN, George Three Gershwin Songs
EMR 16075 SUBA, Eduardo (Arr.) Tico-Tico
EMR 16071 TCHAIKOVSKY, Pyotr Ilyitch Variations On A Rococo Theme

Clarinet & Orchestra

- EMR 16078 PUCCINI, Giacomo E Lucevan le stelle

2 Clarinets

- EMR 16002 CRUSELL, Bernhard Henrik Duet

2 Clarinets & Piano

- EMR 16003 MENDELSSOHN, Felix Concertpiece Nr. 1
EMR 16004 MENDELSSOHN, Felix Concertpiece Nr. 2
EMR 16001 PONCHIELLI, Amilcare Il Convegno

Clarinet Solo or Duet & Piano

- EMR 16127 BOWMAN, Euday Louis 12th Street Rag

Clarinet Solo or Duet & Concert Band

- EMR 16141 BOWMAN, Euday Louis 12th Street Rag

Soprano, Clarinet & Piano

- EMR 16087 BACH, Johann Sebastian Aus Liebe
EMR 16089 SCHUBERT, Franz Der Hirt auf dem Felsen
EMR 16094 BACH, Johann Sebastian Jesus bleibet meine Freude
EMR 16093 DELIBES, Léo The Flower Duet

Soprano, Clarinet & Orchestra

- EMR 16077 BACH, Johann Sebastian Aus Liebe
EMR 16079 SCHUBERT, Franz Der Hirt auf dem Felsen
EMR 16084 BACH, Johann Sebastian Jesus bleibet meine Freude
EMR 16083 DELIBES, Léo The Flower Duet